

BORZALINO
ITALIAN LUXURY LIVING



PAUL

PAUL

La serie di tavolini Paul fanno della leggerezza estetica il loro punto di forza. Un insieme armonicamente perfetto di forme geometriche essenziali sapientemente congiunte a formare degli oggetti senza tempo. Il tutto è arricchito da materiali eccellenti quali l'ottone per la struttura, la pietra per i piani inferiori ed il vetro per il piano d'appoggio superiore.

Piano: superiore in cristallo trasparente e piano inferiore in marmo bisellato. **Struttura:** metallo con appropriati sottopiedi in plastica.

EN

The Paul series of small tables make aesthetic lightness their strong point. A harmonically perfect set of essential geometric forms, wisely combined to create timeless objects. Everything is enriched with excellent materials such as brass for the structure, stone for the lower shelves, and glass for the upper surfaces.

Top: transparent upper glass top in glass and with chamfer lower marble top. **Structure:** metal with appropriate plastic glides.

FR

Les tables basses de la série Paul font de la légèreté esthétique leur point fort. Un ensemble harmonieusement parfait de formes géométriques essentielles habilement combinées pour former des objets intemporels. Tout est enrichi par d'excellents matériaux tels que le laiton pour la structure, la pierre pour les plateaux inférieurs et le verre pour le plateau supérieur.

Plateau : supérieur en cristal inférieur transparent et plateau inférieur en marbre biseauté. **Structure :** métal avec des patins en plastique appropriés.

BORZALINO

ITALIAN LUXURY LIVING



PAUL 2 Ø 39 h 48 /Brass frame finish Burnished bronze. Crystal glass upper top. Persiano giallo Travertine lower top.
PAUL 1 78,5x78,5 h 30 /Brass frame finish Burnished bronze. Crystal glass upper top. Persiano giallo Travertine lower top.

DETAILS



marmo bordo bisellato
beveled edge marble
marbre bord biseauté



struttura in ottone
brass frame
structure en laiton



particolare struttura portavaso
particular vase holder structure
structure spécifique porte-vase

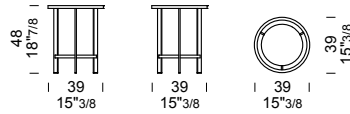
PAUL



PAUL 2 Ø 39 h 48 /Brass frame finish Satin Brass. Crystal glass upper top. Amazonite Extra marble lower top.

Ø 39 h 48

PAUL 2 /tavolino
/coffee table
/table basse



2 pcs



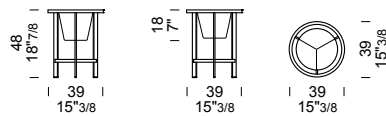
marble top packed
in fumigated wooden crate



PAUL 2 Ø 39 h 48 /Brass frame finish Satin Brass. Upper flower stand and Blue Island marble lower top.

Ø 39 h 48

PA2F /tavolino con portavaso
/coffee table with flowerpot
/table basse avec pot de fleurs



1 pc

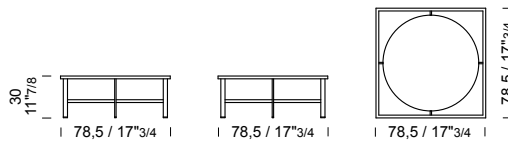
PAUL



PAUL 1 78,5x78,5 h 30 /Brass frame finish Burnished bronze. Smoky glass upper top. Verde Alpi marble lower top.

78,5x78,5 h 30

PAUL 1 /tavolino
/coffee table
/table basse
/Beistelltisch



2 pcs



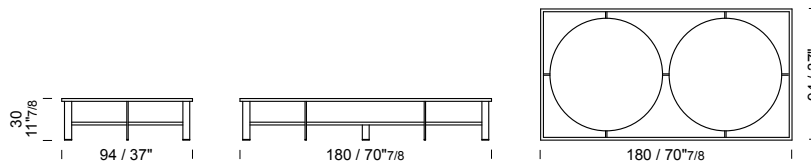
marble top packed
in fumigated wooden crate



PAUL 3 180x94 h 30 /Brass frame finish Burnished bronze. Crystal glass upper top. Emperor Dark marble lower top.

180x94 h 30

PAUL 3 /tavolino
/coffee table
/table basse
/Beistelltisch



2 pcs



marble top packed
in fumigated wooden crate

PIETRA STONE PIERRE

LUCIDO / GLOSS / BRILLANT



CARRARA ARABESCATO (MA1)



CALACATTA VAGLI ORO (MA4)



DAINO REALE (MA1)



BRAGHI (GRANITE) (MA1)



BLUE ISLAND (QUARZITE) (MA4)



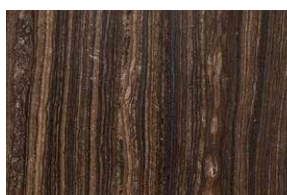
TRAVERTINO GIALLO (MA1)



SEQUOIA BROWN (MA3)



CAPPUCCINO (MA4)



ERAMOSA (MA3)



EMPERADOR DARK (MA1)



PORT LAURENT (MA2)



ROSSO LEVANTO (MA2)



AMAZONITE EXTRA* (MA5)

Non disponibile per i prodotti
Not available for products
Pas disponible pour les produits

**Shield, Brock, Alex, BSeries,
Ground, Saar e Kris Buffet**



VERDE ALPI (MA2)



SAHARA NOIR (MA2)



NERO MARQUINIA (MA1)

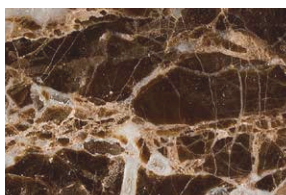
OPACO / MATT / MAT



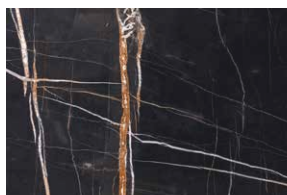
CALACATTA VAGLI ORO (MA4)



CAPPUCCINO (MA4)



EMPERADOR DARK (MA1)



SAHARA NOIR (MA2)

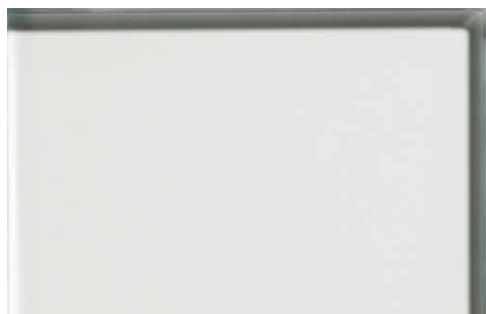
Tutte le immagini sono inserite a scopo illustrativo, i colori sono puramente indicativi e possono differire dai toni reali.
All images are shown for illustrative purposes, the colors are purely indicative and may differ from the real tones
Toutes les images sont présentées à titre d'illustration, les couleurs vues sur l'écran sont purement indicatives et peuvent différer des tons réels.

VETRO GLASS VERRE

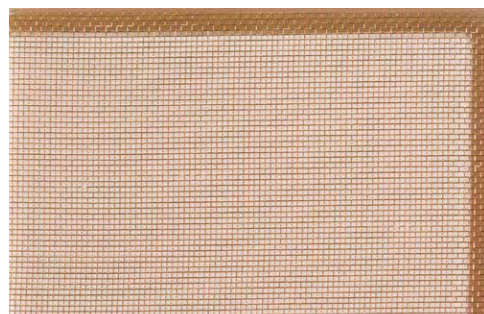
I vetri mesh sono una novità estetica e tecnologica. Molto particolari, sono l'unione di una rete metallica, argento o oro, all'interno di due strati di vetro di qualsiasi colore. Così da poter creare elegantissimi abbinamenti tra texture e vetro unito. In caso di rottura i reticoli di metallo trattengono i frammenti di vetro.

Mesh glass is an aesthetic and technological innovation. Very particular, they are the union of a metallic net, silver or gold, inside two layers of glass of any color. So you can create elegant combinations of textures and combined glass. In case of breakage, the metal lattices retain the glass fragments.

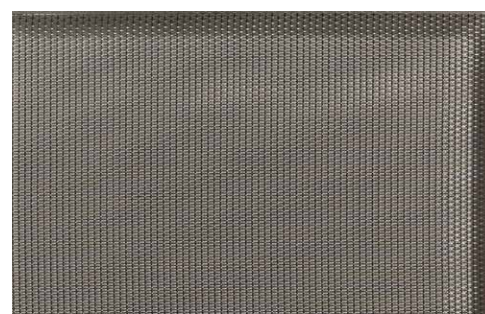
Les verres mesh sont une nouveauté esthétique et technologique. Très particuliers, est l'union d'une maille métallique, d'argent ou d'or, à l'intérieur de deux couches de verre de toute couleur. Ainsi pour créer très élégantes combinaisons de textures et verre uni. En cas de rupture les mailles métalliques retiennent les éclats de verre.



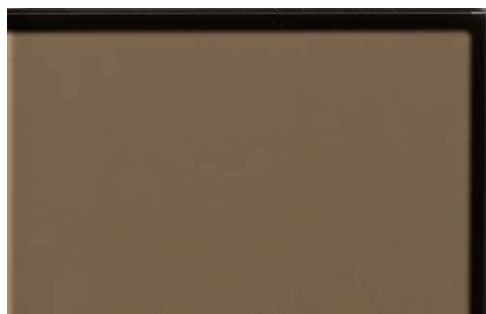
EXTRA CLEAR (VT1)



GOLDEN MESH ON EXTRA CLEAR (VT2)



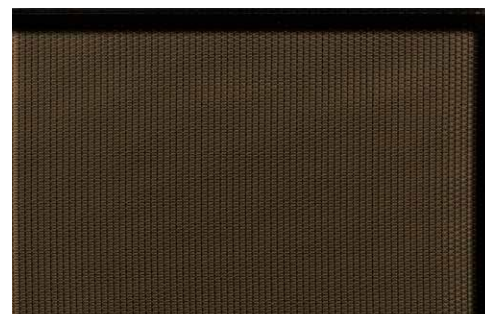
SILVER MESH ON EXTRA CLEAR (VT2)



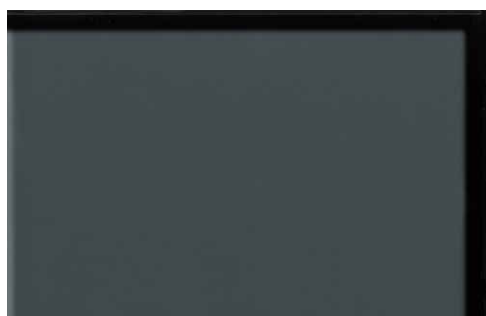
BRONZE (VT1)



GOLDEN MESH ON BRONZE (VT2)



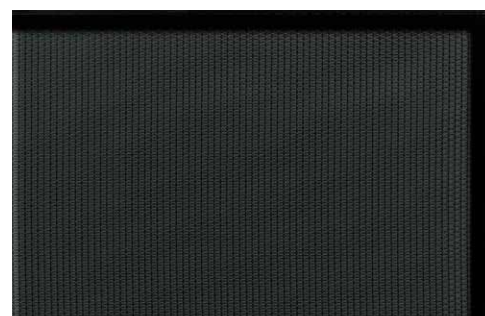
SILVER MESH ON BRONZE (VT2)



SMOKY (VT1)



GOLDEN MESH ON SMOKY (VT2)



SILVER MESH ON SMOKY (VT2)

Tutte le immagini sono inserite a scopo illustrativo, i colori sono puramente indicativi e possono differire dai toni reali.
All images are shown for illustrative purposes, the colors are purely indicative and may differ from the real tones.
Toutes les images sont présentées à titre d'illustration, les couleurs vues sur l'écran sont purement indicatives et peuvent différer des tons réels.

METALLO METAL MÉTAL

Fedeli all'idea di una collezione in armonia con il naturale, abbiniamo metalli nelle finiture brunate, satinare, laccate e cromate.

Faithful to the idea of a collection in harmony with the natural, we combine metals in burnished, satin, lacquered and chrome finishes.

Fidèle à l'idée d'une collection en harmonie avec le naturel, nous associons les métaux dans des finitions brunies, satinées, laquées et chromées.

LACCATO OPACO / MATT LACQUERED / LAQUÉ MAT

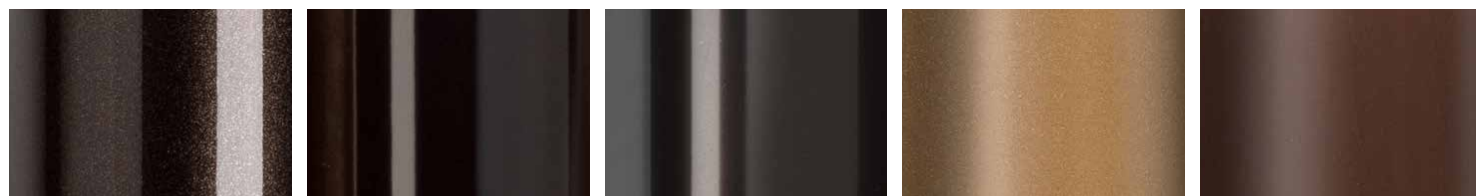


SAND GOLD

SUNSET COPPER

LACQUERED RAL CODE

LACCATO LUCIDO / GLOSS LACQUERED / LAQUÉ BRILLANT



GLOSS GREY

GLOSS BLACK

TITANIO

BRASS (ON IRON)

BRONZE (ON IRON)

VERNICE A POLVERE / POWDER COATING / PEINTURE EN POUDRE



YW276I BEIGE

YY217E GOLD

ANODIC BRONZE

SW268JR BRONZE

VULCAN GREY



ANODIC BLACK

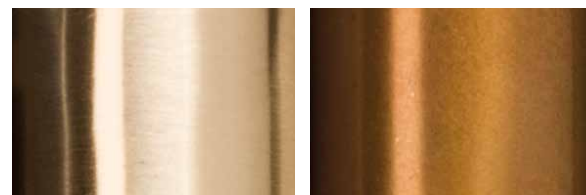
GALVANICA / GALVANIZED / GALVANISATION



CHROME

SATIN CHROME

FINITURA SU OTTONE / FINISHING ON BRASS / FINITION SUR LAITON



SATIN BRASS (ON BRASS)

BURNISHED BRONZE (ON BRASS)

Tutte le immagini sono inserite a scopo illustrativo, i colori sono puramente indicativi e possono differire dai toni reali.
All images are shown for illustrative purposes, the colors are purely indicative and may differ from the real tones.
Toutes les images sont présentées à titre d'illustration, les couleurs vues sur l'écran sont purement indicatives et peuvent différer des tons réels.

TABELLA FINITURE METALLO
METAL FINISHES LIST
LISTE DES FINITIONS DU MÉTAL

	VULCAN GREY	SAND GOLD	SUNSET COPPER	LACQUERED RAL	GLOSS BLACK	GLOSS GREY	BRONZE (ON IRON)	BRASS (ON IRON)	CHROME	SATIN CHROME	ANODIC BLACK	ANODIC BRONZE	TITANIO	YW276I BEIGE	YY27E GOLD	SW268JR BRONZE	SATIN BRASS (ON BRASS)	BURNISHED BRONZE (ON BRASS)
ALEX	●	○	○	○	○	○	-	-	○	○	●	●	-	●	●	●	●	●
AYTON	●	●	●	●	●	●	○	○	○	○	●	●	○	●	●	●	-	-
BEN	●	●	●	●	●	●	○	○	○	○	●	●	○	●	●	●	-	-
B195	●	●	●	●	●	●	○	○	-	-	●	●	○	●	●	●	-	-
BSERIES	●	●	●	●	●	●	○	○	○	○	●	●	○	●	●	●	-	-
CAMY	●	●	●	●	●	●	○	○	○	○	●	●	○	●	●	●	-	-
CLIO & GEA	●	●	●	●	●	●	○	○	○	○	●	●	●	●	●	●	-	-
CURZIO	●	●	●	●	●	●	○	○	○	○	●	●	○	●	●	●	-	-
DIDEROT	●	●	●	●	●	●	-	-	○	○	●	●	-	●	●	●	-	-
DIVA	●	●	●	●	●	●	○	○	○	○	●	●	●	●	●	●	-	-
DIVA CHAIR	●	●	●	●	●	●	○	○	○	○	●	●	●	●	●	●	-	-
DIVA MINI SOFA	●	●	●	●	●	●	○	○	○	○	●	●	●	●	●	●	-	-
DIVA STOOL	●	-	-	○	-	-	-	-	-	-	●	●	-	●	●	●	-	-
DORIAN	○	-	-	○	-	-	-	-	-	-	●	●	●	○	○	○	-	-
ECLIPSE	●	○	○	○	○	○	-	-	○	○	●	●	-	●	●	●	●	●
ESME	●	●	●	●	●	●	○	○	○	○	●	●	○	●	●	●	-	-
EVE PLUS & CAPITONNÉ	●	●	●	●	●	●	○	○	○	○	●	●	○	●	●	●	-	-
FRISBEE	●	-	-	○	-	-	-	-	●	●	●	●	-	●	●	●	-	-
GOLIA	●	●	●	●	●	●	○	○	○	○	●	●	○	●	●	●	-	-
GORDON	●	●	●	●	●	●	○	○	○	○	●	●	●	●	●	●	-	-
GROUND	●	●	●	●	●	●	-	-	-	-	●	●	○	●	●	●	-	-
HALF MOON	●	○	○	○	○	○	-	-	○	○	●	●	-	●	●	●	●	●
HARMONY	●	●	●	●	●	●	○	○	○	○	●	●	○	●	●	●	-	-
HUG	●	-	-	○	-	-	-	-	○	○	●	●	-	●	●	●	●	●
KRIS BOOKCASE AND BUFFET	●	○	○	○	○	○	-	-	○	○	●	●	●	●	●	●	●	●
KRIS TAV	●	○	○	○	○	○	-	-	○	○	●	●	○	●	●	●	●	●
LEO	-	-	-	-	-	-	-	-	-	-	-	-	-	-	-	-	●	●
LIRA LAMPSHADE / STRUCTURE	●	-	-	○	●	-	-	-	○	○	●	●	-	●	●	●	-	-
LIRA DOME	●	-	-	-	●	-	-	-	○	○	-	-	-	-	-	-	●	●
MARTIN	●	●	●	●	●	●	-	-	○	○	●	●	○	●	●	●	-	-
MERIDIAN	●	-	-	○	-	-	-	-	-	-	-	-	-	●	●	●	●	●
MIA	●	●	●	●	●	●	○	○	○	○	●	●	○	●	●	●	-	-
MINERVA	●	○	○	○	○	○	○	○	○	○	●	●	●	●	●	●	-	-
NEW KAP	●	●	●	●	●	●	○	○	○	○	●	●	●	●	●	●	-	-
NIMA	-	-	-	-	-	-	-	-	-	-	-	-	-	-	-	-	●	●
PAUL	●	-	-	○	-	-	-	-	-	-	●	●	-	●	●	●	●	●
SAAR COFFEE TABLE	●	○	○	○	-	-	○	○	-	-	●	●	-	●	●	●	-	-
SAAR TABLE	●	○	○	○	-	-	○	○	-	-	●	●	-	●	●	●	-	-
SIGMUND	●	●	●	●	●	●	○	○	○	○	●	●	○	●	●	●	-	-
VOLTAIRE	●	●	●	●	●	●	-	-	○	○	●	●	-	●	●	●	-	-
ZENN	●	-	-	-	-	-	-	-	-	-	●	●	-	●	●	●	●	●
ZOE STOOL	●	-	-	○	-	-	-	-	-	-	●	●	-	●	●	●	-	-

● di serie / standard / en standard

○ a richiesta con supplemento prezzo / on request with surcharge / sur demande avec supplément

- non disponibile / not available / pas disponible